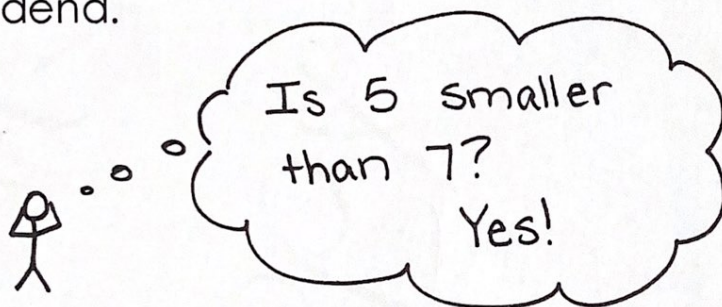
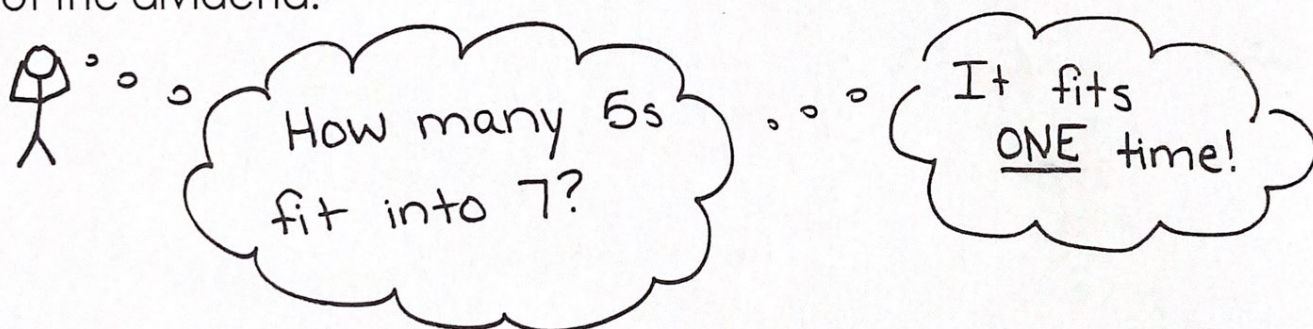


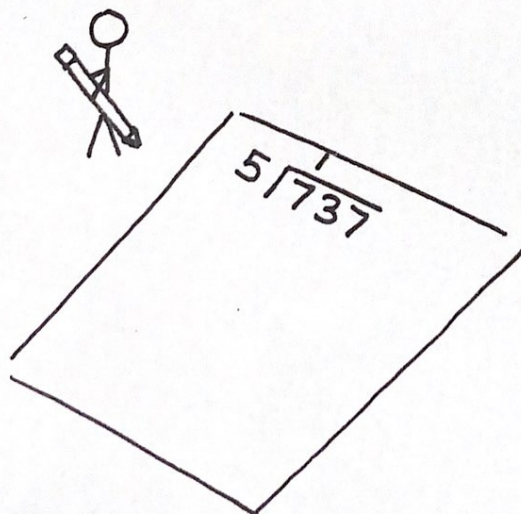
**Step 1)** Ask yourself if the divisor can fit into the first digit in the dividend.



**Step 2)** How many of the divisor can you fit into the first digit of the dividend.

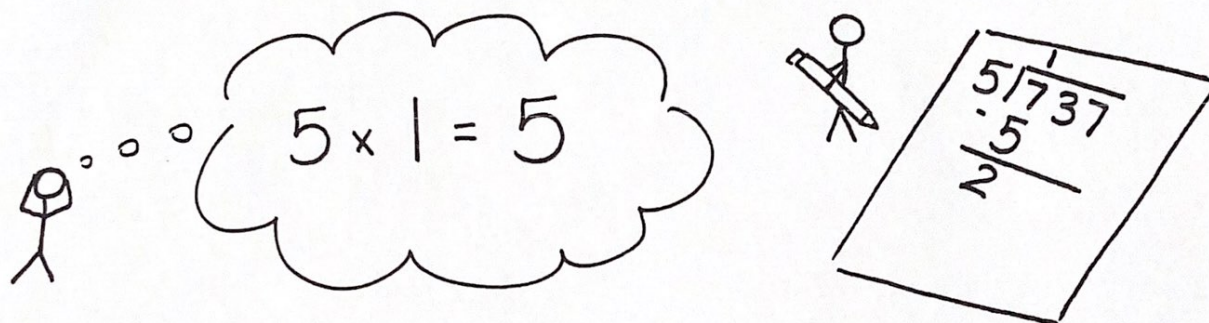


**Step 3)** Put a 1 on top of the frame above the digit you used in Step 2. \*This number will be different depending on your answer\*

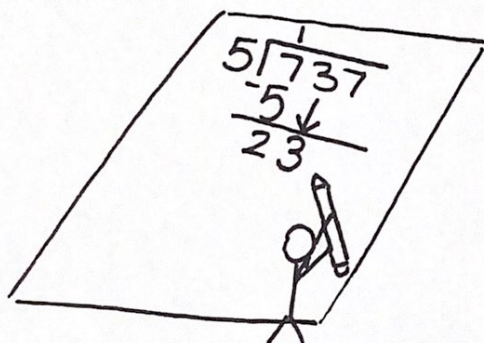




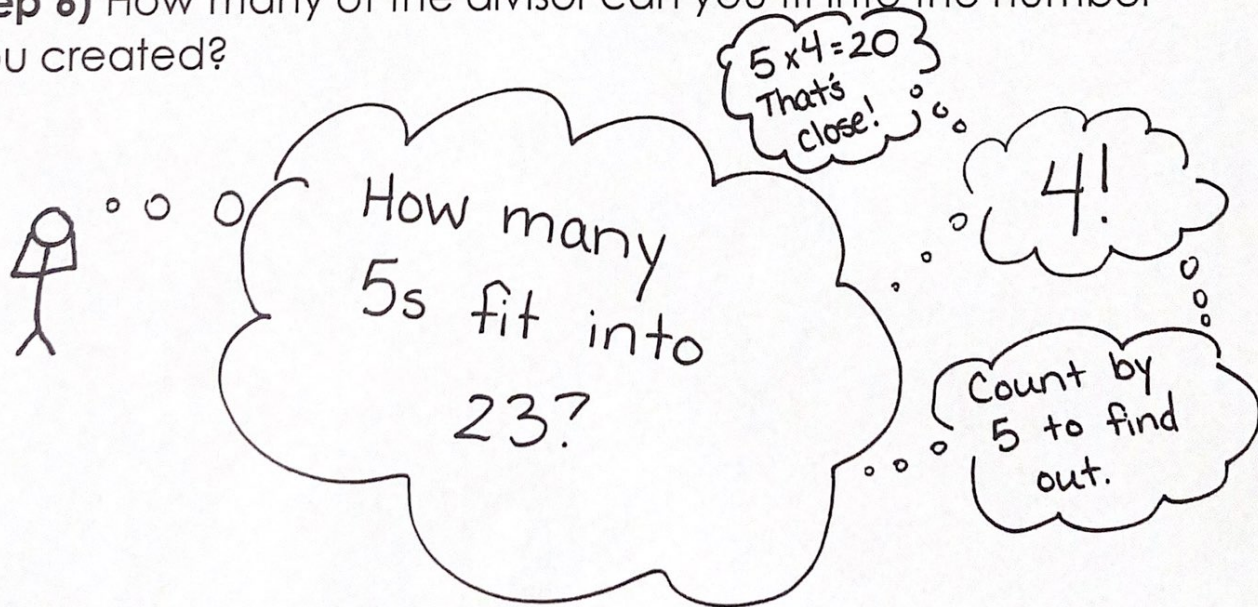
**Step 4)** Multiply the divisor by the digit you just placed on the top of the frame. Write the product of those two factors below the digit you are working with in the dividend. Subtract.



**Step 5)** Bring down the next digit in the dividend.

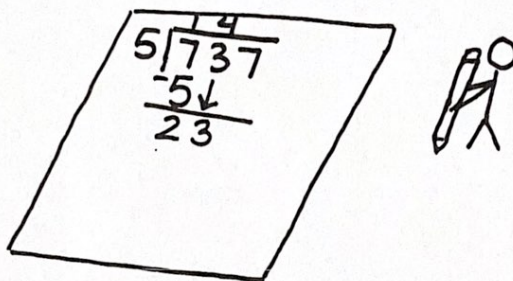


**Step 6)** How many of the divisor can you fit into the number you created?

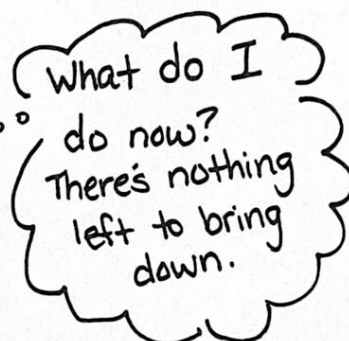
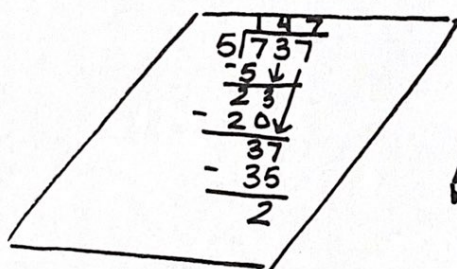




**Step 7)** Record your answer on the frame.



**Step 8)** Repeat steps 4-6 until you no longer have any digits from the dividend to bring down.



**\*\*\*Be Careful of Zeros!** If your divisor cannot fit into the digit that is brought down (a zero) you multiply the divisor by zero, record the zero on the frame, and repeat steps 4-6.

**Step 9)** If the number at the bottom of the frame is smaller than your divisor, and you can't bring any more digits down from the dividend, that is your remainder.

